

## REQUIREMENTS IN THE RANGE OF PRINT AND PACKAGING

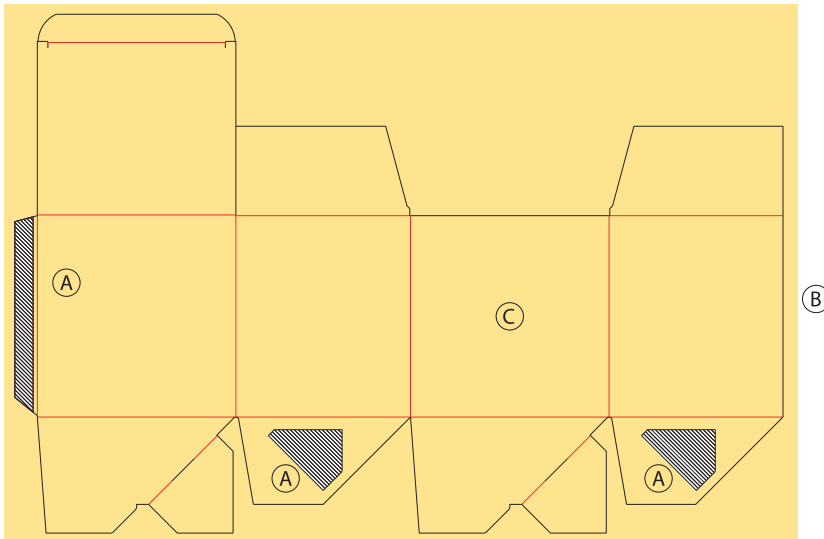
### Data migration / data transfer

Our Pre-Press requires either a PDF as interchange format or an open-format-document for Illustrator, InDesign or Photoshop in the latest version. The used fonts and images need to be attached.

### Requirements for creation of a layout document

To ensure a correctly positioned document construction, we provide our in-house-developed and digital die cutter outline. The color of the die cutter outline has to be defined as spot colour. Please ensure that the contour is set to „overprint“.

- A) this area needs to be **free** from color and varnish
- B) default values for bleed is at least **4mm** (corrugated material at least **8mm**)
- C) the space between images/text and creasing/cut has to be at least **4mm**



### General printing-requirements/informations

For optimum results a image resolution of at least 300dpi (bitmap 600dpi) is necessary. The print-file has to be based on the CMYK color mode and should not contain any objects with other color modes (f.e. RGB). Our workflow system creates the suitable trap by itself.

#### Minimum line width:

Positive: 0,2mm

Negative: 0,4mm

#### Minimal type size (positive/negative):

sans serif font: 6 pt positive /7 pt negative

serif font: 6 pt positive/8 pt negative